

**First**  
in the world!

# Duplus-dishwasher

■ WD-9



**Wexiödisk** 

# ■ Our history – clean dishes



## Wexiödisk was founded in 1972

The three founder members, with experience from production and development of catering equipment, saw a possibility to supply a range of dishwashers within reach for distributors outside the large established organisations. Through knowledge, foresight and also an ambition to offer something really good a range of quality machines was created. The extraordinary high quality and new innovations gave quick selling success even outside Sweden.

## Our quality

Our ambition from the start has been that all our customers are satisfied. Therefore we focus on being able to offer operation safety, low operation costs and also a good working environment rather than focusing on low price. In other words an early focus on Life Cycle Cost. Excellent dishwashing result goes without saying.

## Our partners

We have carefully chosen our partners who distribute, sell and service our products. Together, through a close dialogue, good product support system and training, we fulfil our customers expectations. Today Wexiödisk is the leading supplier in Scandinavia, with not only a distribution network in Europe but also for example in Japan and Australia. During later years Wexiödisk have even had prestigious projects in the inflight catering sector, a customer group with very high demands.

## Our products

We will continue our focus on product development, to keep and improve customer satisfaction by having a competitive and technically advanced product range. To realize it, we use latest technology together with skilled and competent employees. A complete production set up, from raw materials to final product test, equipped with automated machines and robots secure quality and accessibility.

## Our environmental focus

Dishwashers use large amounts of energy, water and chemicals. Therefore in more recent years Wexiödisk have focused even more on the environmental aspect, which has led to the development of new unique products. ICS+ and DUPLUS are two of the new patented techniques that reduce the environmental impact. This also reflects in a considerable lower operation cost.

## Everyday facts

Wexiödisk is situated in Växjö in South Sweden. The plant is about 11000 m<sup>2</sup>. Number of employees about 175.

## Our ambition

Every installation should be a good reference.



# ■ Unique single-tank dishwasher with cost-saving and environmentally friendly technology

- **Double final rinse with Duplus technology**
  - improved rinsing results using less fresh water.
- **Flexible environmentally friendly dishwasher with large washing compartment**
  - settings for normal and heavily soiled loads.
- **Optimum wash results** thanks to the self-draining wash arms.
- **Efficient and ergonomic**
  - Duplus technology reduces the consumption of fresh water, chemicals, etc.
- **Particularly large cost savings** if osmosis water has to be used.



Drying conveyor and basin conveyor not included in the range.

# First in the world with Duplus technology

## Wexiödisk – the first in the world

Wexiödisk is the first in the world with a double final rinse for hood dishwashers. The technology has been used on tunnel dishwashers for around 20 years. On hood dishwashers, the technology is called DUPLUS and is patented by Wexiödisk. Duplus technology means that the rinsing process uses considerably less fresh water than traditional final rinsing systems. Wexiödisk's WD-9 and WD-9A models are designed to use this Duplus technology. The use of chemicals, electricity and water is minimised, meaning low operating costs for the customer and major savings for the environment.

## Unique new design

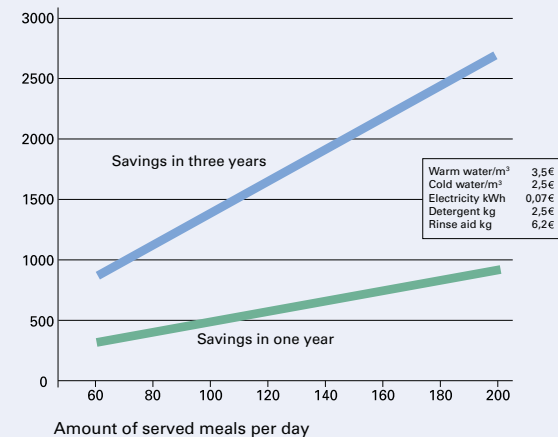
The new design gives the user an ergonomic and easy to maintain dishwasher. The WD-9 also has normal and heavily soiled washing settings, making it the most flexible, economic and environmentally friendly hood dishwasher on the market.



## Duplus – lower operating costs and reduced impact on the environment

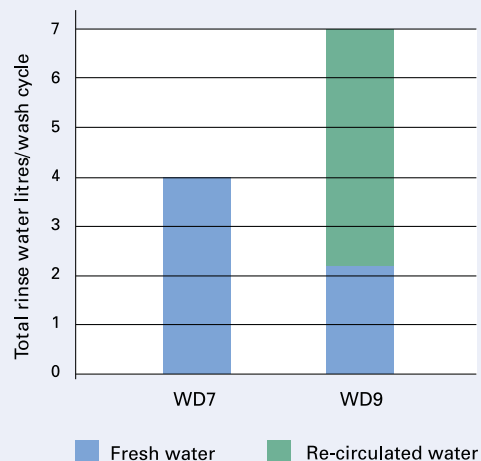
Fresh water consumption for each washing cycle is 45% lower with the WD-9 compared with traditional hood dishwashers. Savings in water consumption during the final rinse also generate savings in detergent, drying agent and electricity consumption costs. The impact on the environment is also reduced.

Savings in running cost EUR



## Duplus – improved rinsing results with less fresh water

With the WD-9, the total volume of rinsing water per basket is 75% higher than with a traditional hood dishwasher of the WD-7 type. Duplus technology with double final rinsing makes this possible. The dishware must first be rinsed with approximately 4.8 litres of recirculating water and then with 2.2 litres of fresh water. A total of 7 litres of rinsing water is used per basket.



## WD-9 – an exceptional, environmentally friendly dishwasher with Duplus technology

The WD-9 is a special machine which uses unique final rinse technology. Duplus technology uses recirculating rinsing water during the first rinsing phase. During the second rinsing phase, fresh water at a temperature of 85-90°C is used. A good working environment, high levels of hygiene, service-friendliness and exceptional results are benefits which make the WD-9 the best and most energy-efficient dishwasher on the market.

The WD-9 and the WD-9A are electronically controlled. Both have innovative solutions such as three wash programs, a unique hood concept and adjustable rinsing pressure. The clearance feed height is 500 mm and the internal width is 610 mm.

## Designed to meet strict hygiene requirements

The wash arms are drained of washing water before the final rinse starts in order to give the best possible wash results and high levels of hygiene. When the wash program finishes, the load can be removed from the dishwasher without any remaining washing water dripping onto the clean dishes and plates.

The wash programs' washing and rinsing times can be adjusted to suit individual requirements. The control system monitors all functions, including water quantity and final rinse temperature. The remaining washing time can be seen on the control panel display. The electronic function alerts you if the washing temperature falls too far. This reduces the risk of foam formation and poorer washing results. The WD-9 and WD-9A support quality assurance in accordance with HACCP.

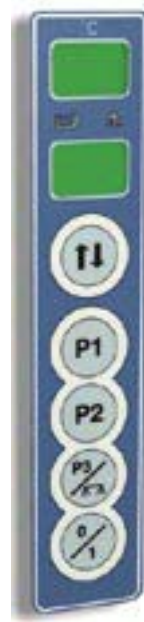
## Efficient and ergonomic

The total volume of rinsing water is 75% greater than with a traditional hood dishwasher. With Duplus technology, fresh water consumption is just 55% of that of a traditional machine, as the dishware is first rinsed with recirculating water. The reduction in water consumption gives savings in electricity, detergent and drying agent, all helping to reduce the impact on the environment.

The automatic hood distinguishes the WD-9 from the WD-9A. On the WD-9A, the hood opens automatically when the wash program has finished. The hood lifts up a few centimetres and then stops to allow the hot steam to escape behind the machine before the hood is raised to its highest position. The load starts to dry immediately and the basket can be removed from the machine. The next basket can then be put in. The hood is closed and the program restarts with the press of a button. The automatic hood improves the ergonomics for the user and makes washing more efficient.

## Extra large savings

If osmosis water is used, the financial savings are considerably larger than normal, as osmosis water is expensive to produce.

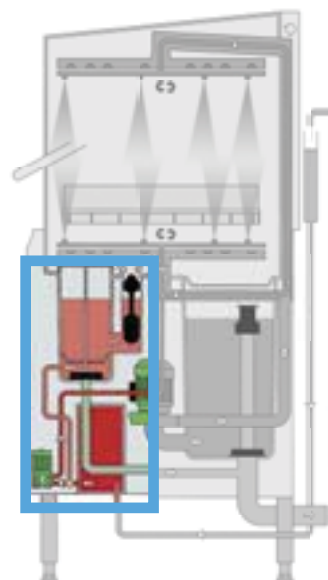


The control panel is easy to use. It shows important information such as the selected program, remaining washing time, temperatures, alarms, number of baskets washed, etc.

In addition to showing the ordinary program selections P1-P3, the displays also show when the cleaning program and pause function (program P0) are activated.



The unique washing system, with the option of choosing between normal and heavily soiled loads, increases the versatility of the machine. The WD-9 can be used in most installations with frequent mixed loads and demanding capacity requirements.



Duplus technology enables double final rinsing to be used in hood dishwashers. The use of chemicals, electricity and water is minimized, making the Wexiödisk WD-9 the most economical and environmentally friendly dishwasher on the market.

# Technical data

Technical data	WD-9	WD-9A
Wash pump (kW)	1,1	1,1
Pump, recirculated final rinse (kW)	0,55	0,55
Pump, hood lift (kW)	--	0,55
Booster heater (kW)	9	9
Heater tank (kW)	9	9
Weight, machine in operation (kg)	160	175
Degree of protection (IP)	45	45

Capacity and operation data	WD-9	WD-9A
Total time/wash program 1 (min)	1,5**	1,5**
Total time/wash program 2 (min)	2,0**	2,0**
Total time/wash program 3 (min)	3,5**	3,5**
Capacity, max (baskets/h)	50	50
Water consumption rinse/program (litres)	2,2	2,2
Energy consumption (kWh of connected power)	40-60%	40-60%
Sound level* (dB(A)) normal pressure/high pressure	63/65	63/65

\* Measured 1 metre from the machine

\*\* Factory setting. The wash time is adjustable.

Connection, machine	WD-9	WD-9A
Total connected power (kW)	10,1	10,1
Main fuse 400V 3N~(A)**	16	16
Max.conn.area 400V 3N~ (L1-L3,N,PE) Cu (mm <sup>2</sup> )	2,5***	2,5***

\*\* Other voltages on request

\*\*\* Delivered with cable 2.5m

Connection water, drain and ventilation	WD-9	WD-9A
Water quality, hardness (°dH)	2 - 7	2 - 7
Hot water conn. 55-70°C (external thread).	R ½"	R ½"
Drain connection, PP pipe (ø mm)	50	50
Water capacity hot water, min/max pressure (kPa)	50/500	50/500
Water capacity warm water, flow (litres/min)	10	10
Floor drain, capacity (litres/sec).	3	3
Ventilation of the machine (m <sup>3</sup> /h).	600	600

Size and weight for transportation	WD-9	WD-9A
Size * LxWxH (mm)*	765x805x1650	765x805x1650
Weight (kg)*	135	150

\* Packaging included

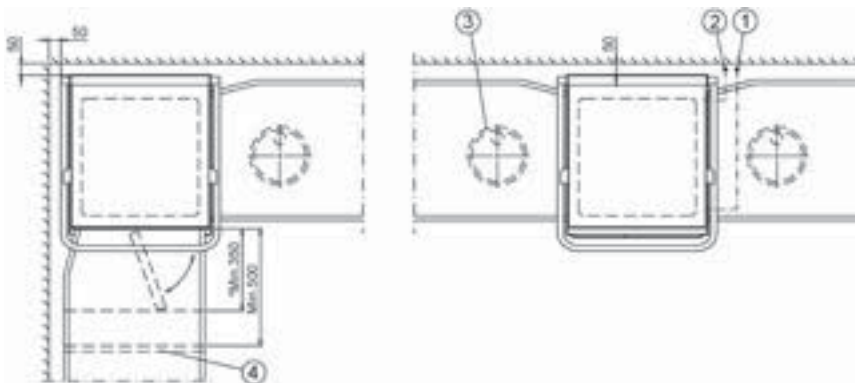
# Article numbers - Extra equipment

Machine Model	Art.no.	Dimensions in mm LxWxH	Booster heater	Electrical connection
WD-9	2-0701	660x698x1540/2080	9 kW	400V 3N~ 50Hz 10,1 kW 16A
WD-9A	2-0701A	660x698x1540/2080	9 kW	400V 3N~ 50Hz 10,1 kW 16A
Extra equipment	Art.no.			
Chemical cabinet	2-1750			
Steam hood with suction connection $\varnothing$ 160 mm	2-0760			
Automatics for suction fan (1-phase closing contact)	2-0760A			
Support for bakery plates (450x600 mm)	2-0765			
Detergent dosing for liquid detergent	2-1553			
Emptying pump	2-1552			

## Connection

Corner feed

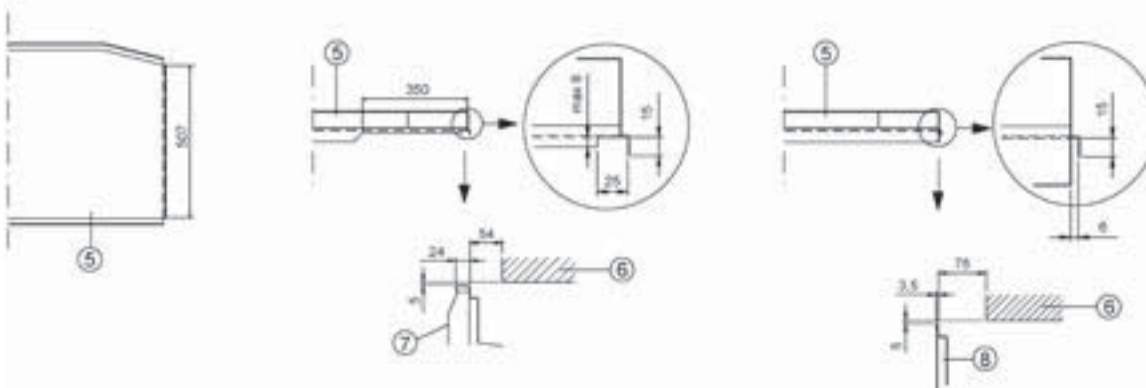
Straight feed



1. Water connection
2. Electrical connection
3. Floor drain, 3 l/sec capacity
4. Legs. Placed min. 500mm in front of the machine.
5. Sink
6. Basket
7. Door
8. Side of the machine

\* Clearance for door. Max. headroom 8mm underneath the dishwasher tank face.

Sink connection

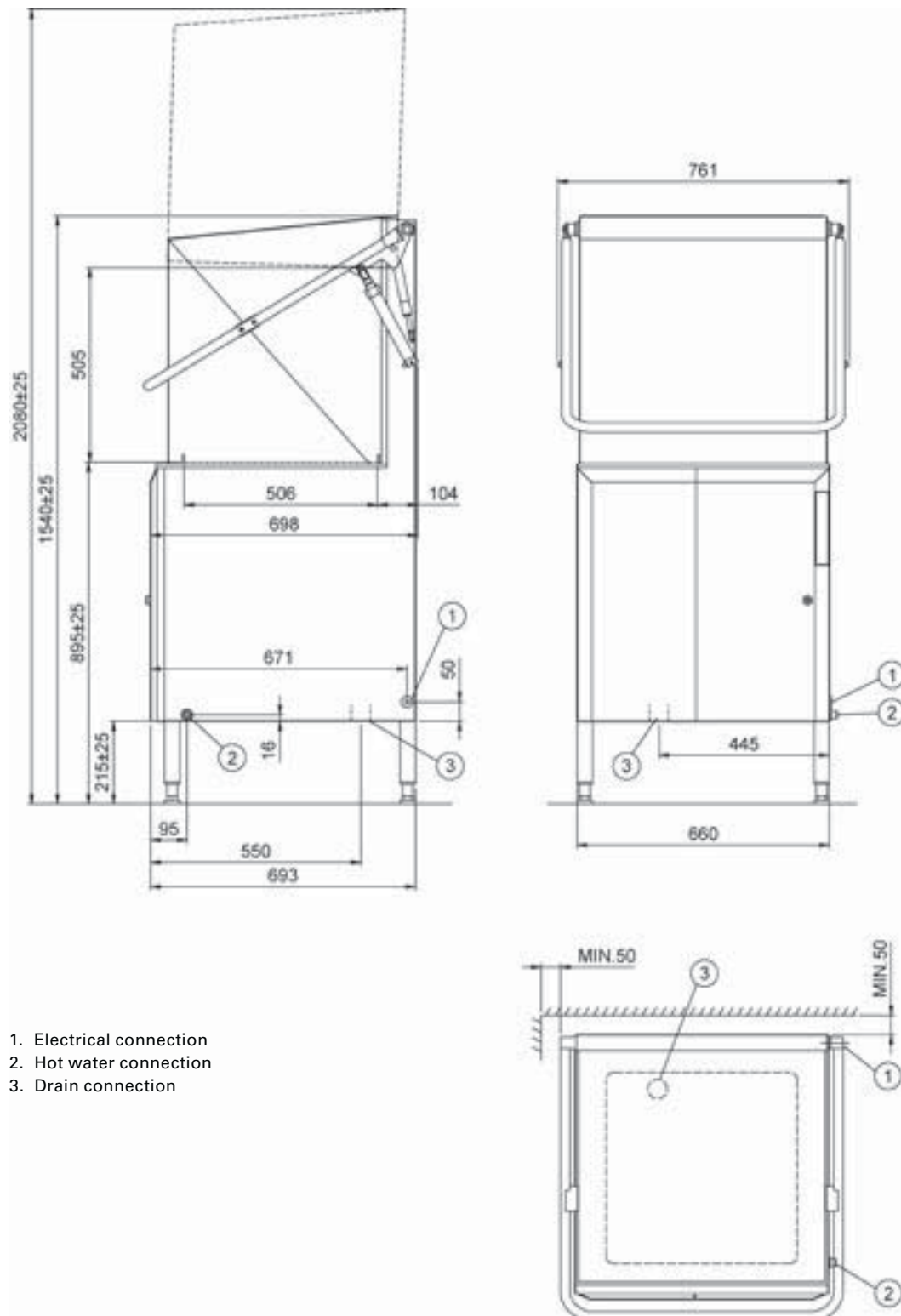


Connections on the front of the machine.

Connections on the side of the machine.



# ■ Dimensional drawings



**BECAUSE WE DO CARE**



**Aishwarya Consolidates Pvt. Ltd.,**

#19, Frist Floor, 10<sup>th</sup> 'B' Main, 27<sup>th</sup> Cross,  
Third Block Jayanagar, BANGALORE – 560 011, INDIA

Tel: +91-80-2664 1200/1/2 Fax: +91-80-2664 1204

E-mail : [aishtek@vsnl.com](mailto:aishtek@vsnl.com) [www.aishwaryaconsolidates.com](http://www.aishwaryaconsolidates.com)